

GRID MAP OF KARNATAKA

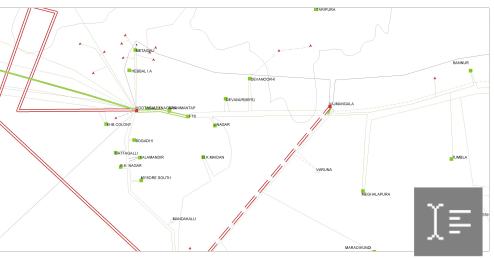
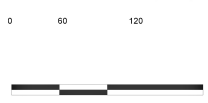
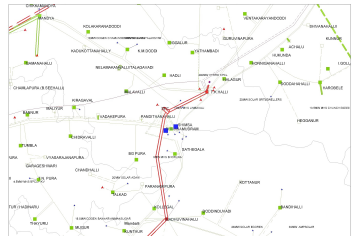
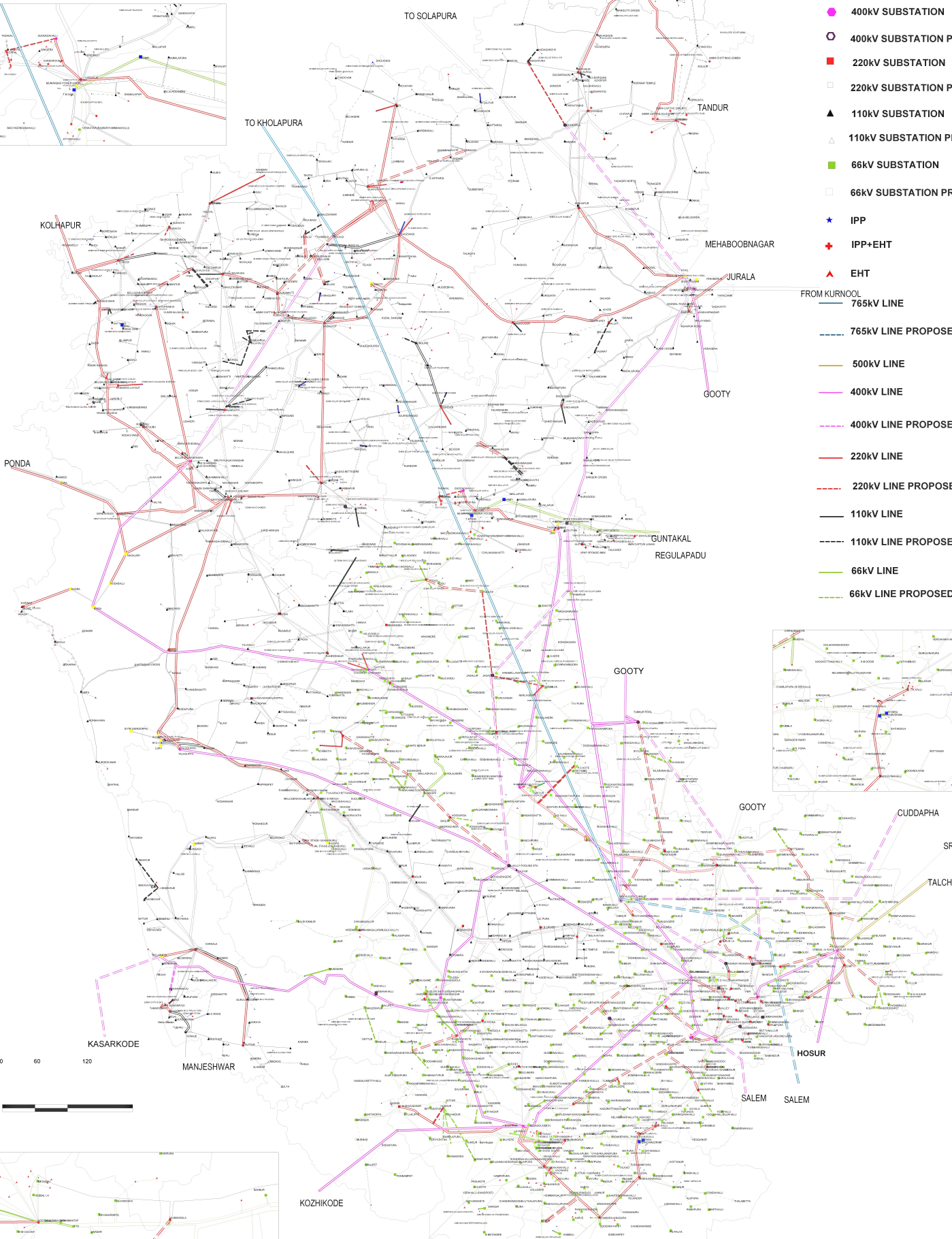
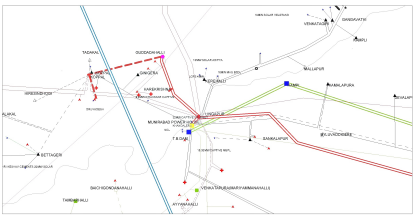
KARNATAKA POWER TRANSMISSION CORPORATION LIMITED

(765kV, 400kV, 220kV, 110kV & 66kV)

As on 31.03.2018



- GENERATING STATION
- 765kV SUBSTATION
- 765kV SUBSTATION PROPOSED
- 400kV SUBSTATION
- 400kV SUBSTATION PROPOSED
- 220kV SUBSTATION
- 220kV SUBSTATION PROPOSED
- 110kV SUBSTATION
- 110kV SUBSTATION PROPOSED
- 66kV SUBSTATION
- 66kV SUBSTATION PROPOSED
- IPP
- IPP+EHT
- EHT
- FROM KURNOOL 765kV LINE
- 765kV LINE PROPOSED
- 500kV LINE
- 400kV LINE
- 400kV LINE PROPOSED
- 220kV LINE
- 220kV LINE PROPOSED
- 110kV LINE
- 110kV LINE PROPOSED
- 66kV LINE
- 66kV LINE PROPOSED



Created with ScanWritr Online editor

<https://www.scanwritr.com/>

Chief Engineer, Electy
(Planning & Co-Ordination)

STATE TRANSMISSION CORPORATION NETWORK